

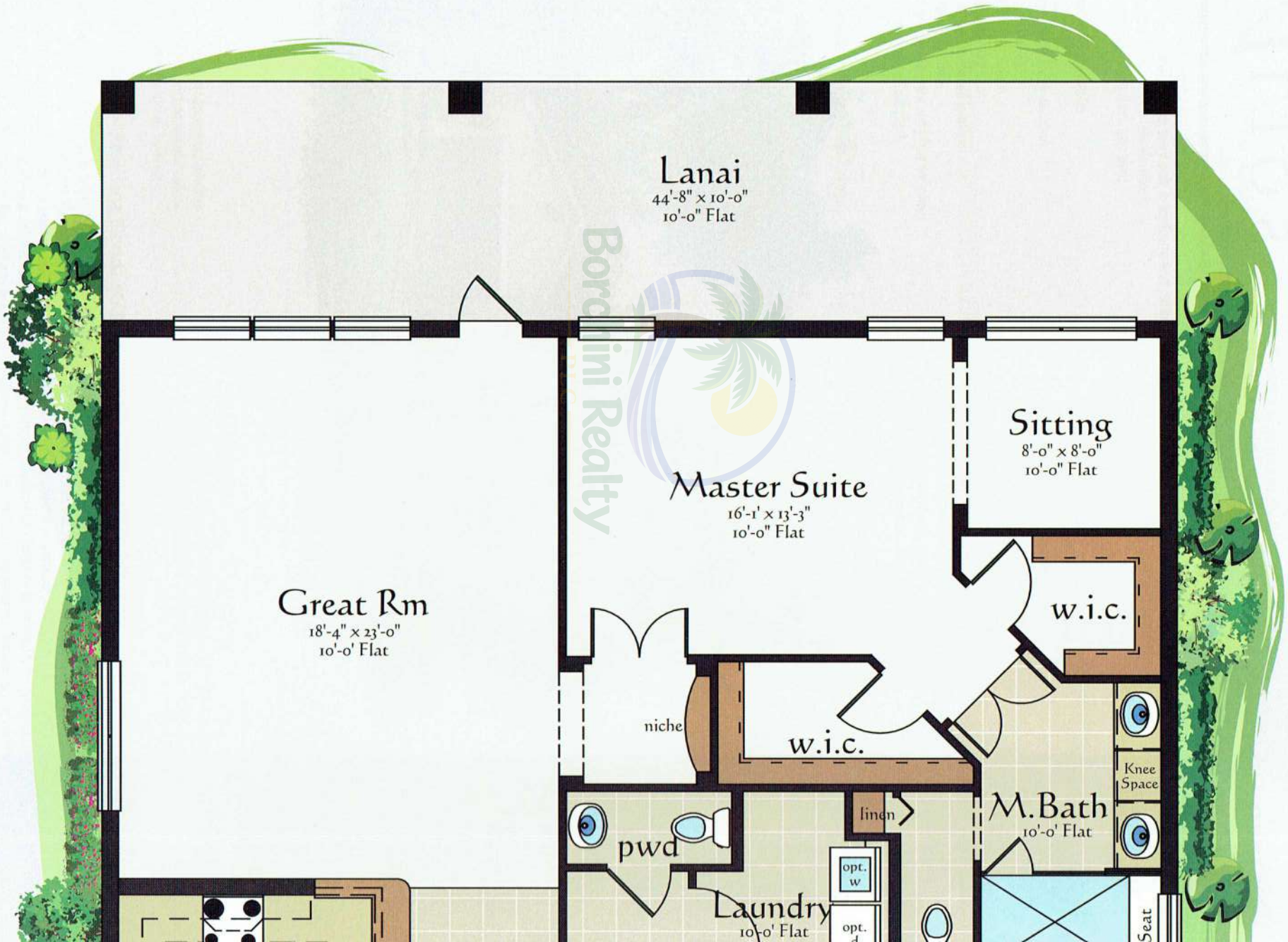
Captiva
GS 1838

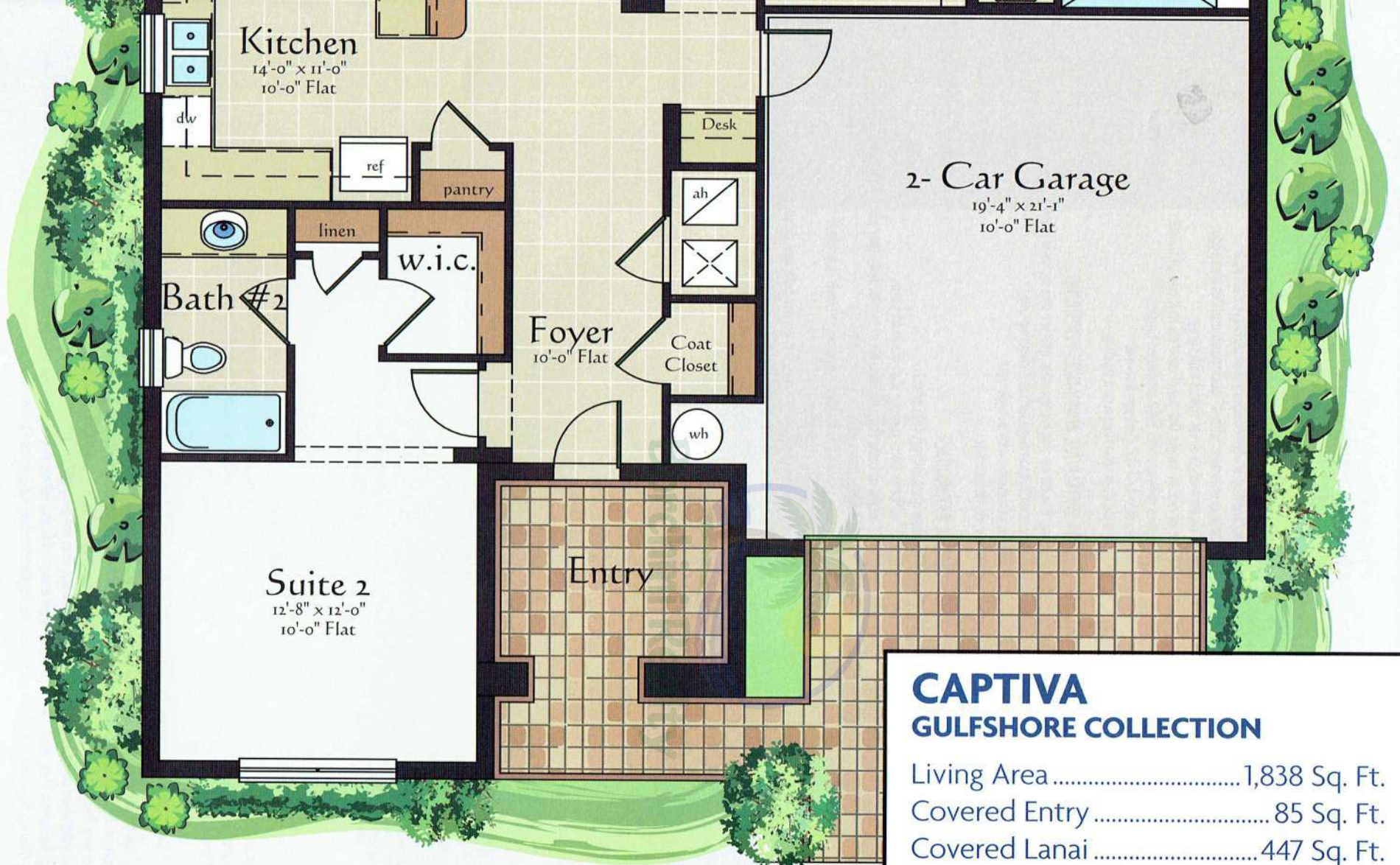
Borchini Realty
www.BorchiniRealty.com
sborchini@gmail.com
407 791-1789

SOLIVITA™

GULFSHORE COLLECTION







**CAPTIVA
GULFSHORE COLLECTION**

Living Area	1,838 Sq. Ft.
Covered Entry	85 Sq. Ft.
Covered Lanai	447 Sq. Ft.
Garage.....	446 Sq. Ft.
<hr/>	
Total.....	2,816 Sq. Ft

1,838 Square Feet of Living Area

- 2 Bedrooms
- 2 ½ Baths
- 2 Car Garage

DISTINCTIVE EXTERIOR FEATURES:

- Exciting Tuscan exterior elevations (optional tile roof available)
- 30 year dimensional asphalt shingle roof (10 year fungus resistant guarantee)
- Choice of decorator selected exterior color packages
- Kwikset antique nickel door handle and deadbolt lock set
- Brick paver driveway, front porch and matching entry walk in Mediterranean pattern
- Covered rear lanai with masonry ceiling finish (per elevation)
- Covered front porch with masonry ceiling finish (per plan)
- 8' sliding glass doors
- Electric garage door opener with two remotes
- Two-car garage
- 6" gutters and splash guard (front & rear per plan)
- Door chime with lighted push button
- 42" brick paver entry walk
- 8' six-panel textured fiberglass front door
- (2) weatherproof outlets in predetermined locations
- (2) hose bibs in predetermined locations
- Decorative coach lights at garage and front entry (per elevation)
- Upgraded carriage house garage doors (per plan)

QUALITY CONSTRUCTION:

- Engineered to meet Environments For Living – Silver Package
- Concrete block construction
- Textured masonry coating with 100% acrylic finish
- Bronze aluminum windows with easy care tilt-out feature
- Monolithic concrete slabs with vapor barrier
- Lennox heat pump heating and cooling system with minimum 13 SEER rating
- One year termite protection from original treatment
- R-30 fiberglass insulation in ceiling above air conditioned space
- R-11 fiberglass wall insulation (between garage and living area)
- 50 gallon water heater
- Screens for all operable windows and sliding glass doors

PREFERRED INTERIOR FEATURES:

- Elegant 9'-4" and 10' ceilings throughout (per plan)
- Upgraded 12" x 12" ceramic tile flooring at foyer, kitchen, breakfast room, all baths and laundry room (per plan)
- Saxony carpet and 6 lb. pad
- Latex gloss enamel paint on baseboards and door casings
- Latex satin finish interior wall paint in white
- 8' six-panel Colonist interior doors
- Oversized 5 1/4" baseboards
- Knockdown texture on ceiling
- Orange peel texture finish on walls
- Decorative drywall niche (per plan)
- Rounded drywall corners (per plan)
- Solid surface windowsills (straight cut)
- Large walk-in closet at master bedroom (per plan)
- Vinyl-clad closet shelving

ELECTRICAL FEATURES:

- 200 AMP electrical service
- Washer & dryer hook-ups (per plan)
- Pre-wired for (2) telephone outlets in predetermined locations
- Pre-wired for (2) television outlets in predetermined locations
- Pre-wired for ceiling fans at great room and all bedrooms

- Structured wiring panel in predetermined location
- White Decora rocker switches throughout
- Smoke detectors
- Carbon monoxide detectors in conjunction with Environments For Living

CONTEMPORARY KITCHEN FEATURES:

- Kohler/Sterling double compartment stainless steel sink
- Laminate countertops with 4" backsplash and beveled edge
- Moen chrome single lever faucet with spray
- Choice of oak or maple flat panel cabinets in choice of finishes
- 30" upper cabinets with fully concealed hinges
- Insinkerator 1/3 H.P. garbage disposal
- Cloud-style upgraded fluorescent lighting

QUALITY WHIRLPOOL APPLIANCES FEATURING:

- 21.9 cu. ft. side-by-side refrigerator with ice and water in door
- Electric smooth top range with self-cleaning oven
- Built-in microwave with outside vent
- Multi-cycle dishwasher

CLASSIC BATHROOMS:

- 42" plate glass mirrors (per plan)
- 6" x 6" white or bone ceramic wall tile in all baths
- 3" x 3" white or bone shower floor tile at master bath (per plan)
- Ceramic bath accessories
- Corian solid surface vanity tops with drop-in bowls (per plan)
- Mirrored medicine cabinets
- Moen chrome faucets with 8" spread at master bath and secondary bath
- Safety grab bar at master shower
- Clear or obscure glass shower enclosure in chrome (master bath only)
- Decorative lighting over vanities
- Exhaust fans in all baths
- Elongated comfort height toilets
- Kohler/Sterling plumbing fixtures throughout with Moen faucets
- Comfort height vanities in all baths

EXCITING OPTIONS:

- Upgraded Environments For Living – Gold package
- Structural options available (per plan)
- Comfort energy package which includes radiant barrier and/ or tailored foam
- Entertainment center & additional built-ins
- Upgraded appliances
- Washers and dryers
- State-of-the-art audio, video and intercom systems
- Security and central vacuum systems
- Flooring and countertop materials
- Upgraded cabinetry and cabinet options
- Upgraded landscaping packages
- Upgraded shower enclosures
- Stacked stone elevation accents

ENVIRONMENTS FOR *Living*

LANDSCAPE:

- These single-family homes include a professional landscape package. Sod in front, side, and rear with irrigation. Lawn care maintenance of all neighborhoods is included in the monthly fees.

395 Village Drive • Poinciana, Florida 34759 • (863) 427-7000 • (800) 592-6099 • www.solivita.com



At least one resident must be 55 years of age or better. A limited number of residents may be younger, but no one under 18 years of age may be in permanent residence. Recreation club, association, and additional golf fees are required. Square footage calculations are from the outside of exterior walls and include interior partition walls. Floor plans are artist's conceptions and are not intended to show specific detailing. The developer may change home design, material, features, methods of construction and price without prior notice. Golf facilities are privately owned and operated. Details are available upon request. #CBCA17970. Not valid where prohibited. This is not intended to be and does not constitute an offer by Avatar directed to the residents of New York, New Jersey, Ohio, or any state jurisdiction, where prohibited by law, except for Solivita West, which may be offered to New Jersey residents. Solivita West is registered with the New Jersey Real Estate Commission. The complete terms of the offering are contained in a New Jersey Offering Statement available from the Sponsor. Registration does not constitute endorsement of the merits or the value of the project.

