

Borchini Realty
Susan Borchini, Broker
www.borchinirealty.com
sborchini@gmail.com
407 791-1789

SIENA

ESTATE COLLECTION



See reverse side for floorplan and options.

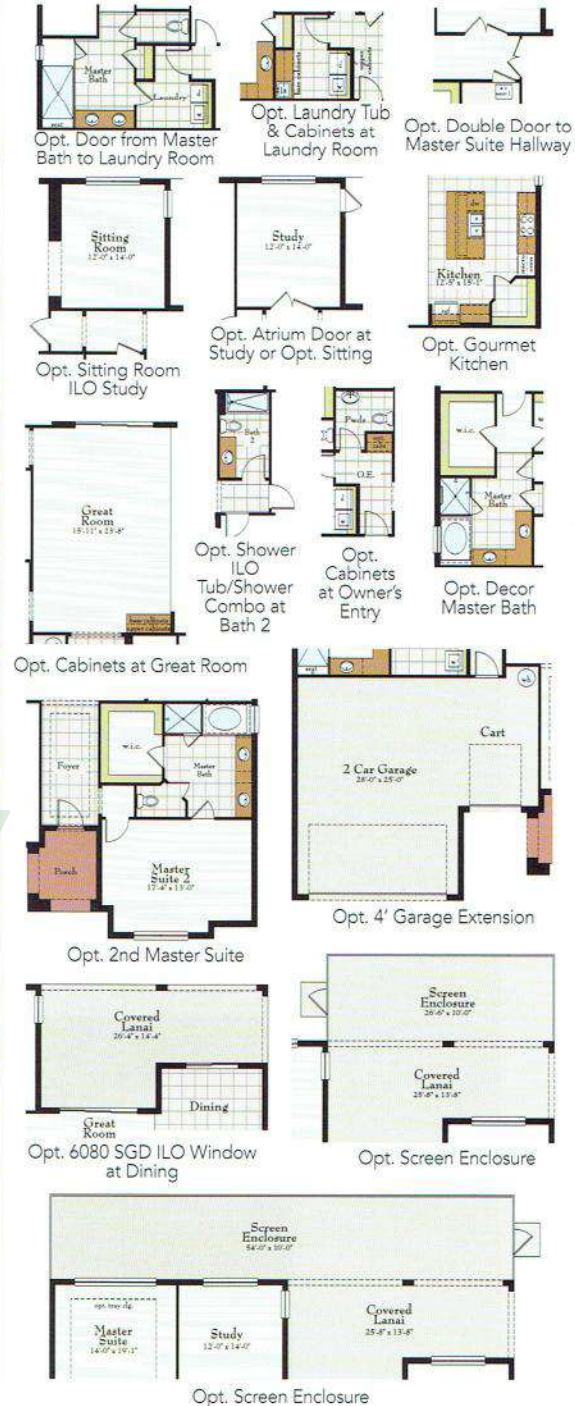
SIENA

2,421 LIVING AREA SQ. FT. • 3,374 TOTAL SQ. FT. • 3 BEDS + STUDY • 2.5 BATHS
2-CAR GARAGE + GOLF CART GARAGE

FLOORPLAN



FLOORPLAN OPTIONS



For more information, visit the Solivita New Homes Sales Center.
395 Village Drive, Kissimmee, Florida 34759

877-335-1543 ■ **AVHomesInc.com**



Developer may change home design, materials, amenities, method of construction, prices, promotions and features without notice. Availability subject to change. Plans, illustrations, photographs and other depictions may contain options and features which are not standard and may not be available on all models, models types or homes. This is not an offer in states and jurisdictions where prior registration is required and void where prohibited by law. Pursuant to the Fair Housing Act, this housing is intended for occupancy by at least one person 55 years of age or older per home, although the occupants of a limited number of the homes may be younger, but no one under 18 years of age may be in permanent residence. Please review the full list of restrictions and disclosures at www.vitalahomes.com/terms-use. AV Homes™ and Solivita™ are exclusive trademarks and service marks of Avatar Properties Inc. © 2014 AV Homes, Inc. All rights reserved. CGC#1508213.